

Doodle Days Cot Quilt

Finished size 39" x 57" (1m x 1.45m)

Designed by Lynne Goldsworthy of lilysquilts.blogspot.com
using the Doodle Days collection from Makower UK www.makoweruk.com



makower uk

Unit 14, Cordwallis Business Park, Clivemont Road,
Maidenhead, Berkshire SL6 7BU +44(0)1628 509640
sales@makoweruk.com www.makoweruk.com

 **andover**

Doodle Days Cot Quilt

Finished size 39" x 57" (1m x 1.45m)

Designed by Lynne Goldsworthy of lilysquilts.blogspot.com

using the Doodle Days collection from Makower UK www.makoweruk.com

Fabric Requirements

SKU	Description	Amount	
1870/Q	Scatter	1 ¾ m / 1 ¾ yds	For backing - leave whole
1871/Q	Placement	F8th	Fussy cut four animals – one 4" square for each
1872/M	Heads	¾ m / ¾ yd	See cutting directions.
1874/V	Floral	F8th	Four 5" squares
1877/M	Stripe	35cm / 13"	Five 2 ½" WOF strips
1879/1	Panel	60cms / 24"	One panel
2000/W02	Antique White Spectrum	60cm / 24"	Cut into two 2 ¼" WOF strips, two 2 ¾" WOF strips and five 2 ½" WOF strips. Trim the 2 ¼" WOF strips to 39 ½" long. Sew the 2 ¾" strips end to end and cut into two 26" lengths. Sew the 2 ½" WOF strips end to end and cut into two 39" and two 53" lengths.
	Wadding		44" x 62"
	Templates		One template
	Bondaweb		Four 4" squares

Notes:

- Read the pattern in full before starting.
- ¼" seams are used throughout except where stated otherwise.
- Press after each seam, pressing seams open or to one side as preferred.
- WOF = width of fabric – a strip of fabric cut from selvedge to selvedge.
- Make sure to visit <http://www.makoweruk.com/projects/> to ensure you are working from the most up-to-date version of the pattern.

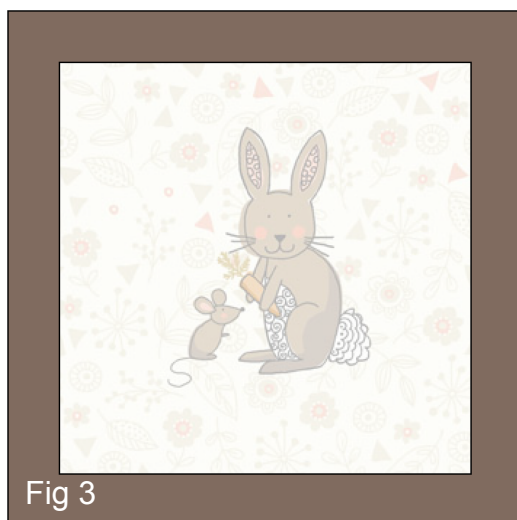
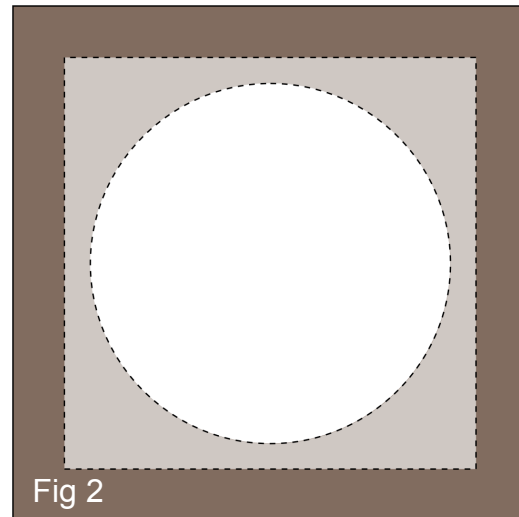
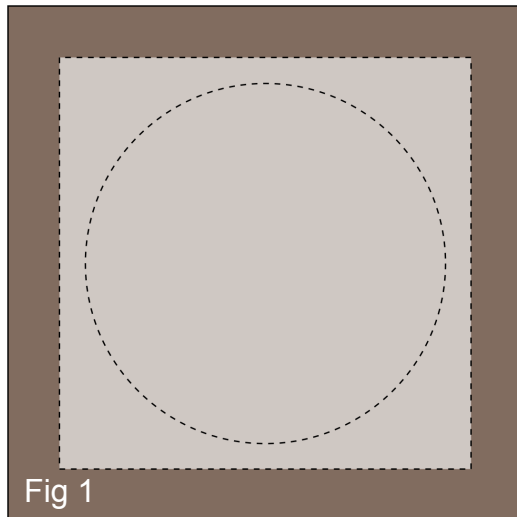
Cutting the fabrics

1. Cut the fabrics as shown in the fabric requirements table.
2. Cut the Heads fabric into four strips three squares deep with a ¼" seam allowance on each side and at each end. Sew end to end taking care to join so that the join cannot be seen. Cut into two lengths of seventeen squares with a ¼" seam allowance on each end and two lengths of twenty-nine squares with a ¼" seam allowance on each end.

Making the quilt top

1. Trim the panel to ¼" beyond the main frames design.
2. Sash the sides with the spectrum 2 ¼" x 39 ½" strips and then the top and bottom with the Spectrum 2 ¾" x 26" strips.
3. Sash the sides of the quilt top with the long Heads strips.

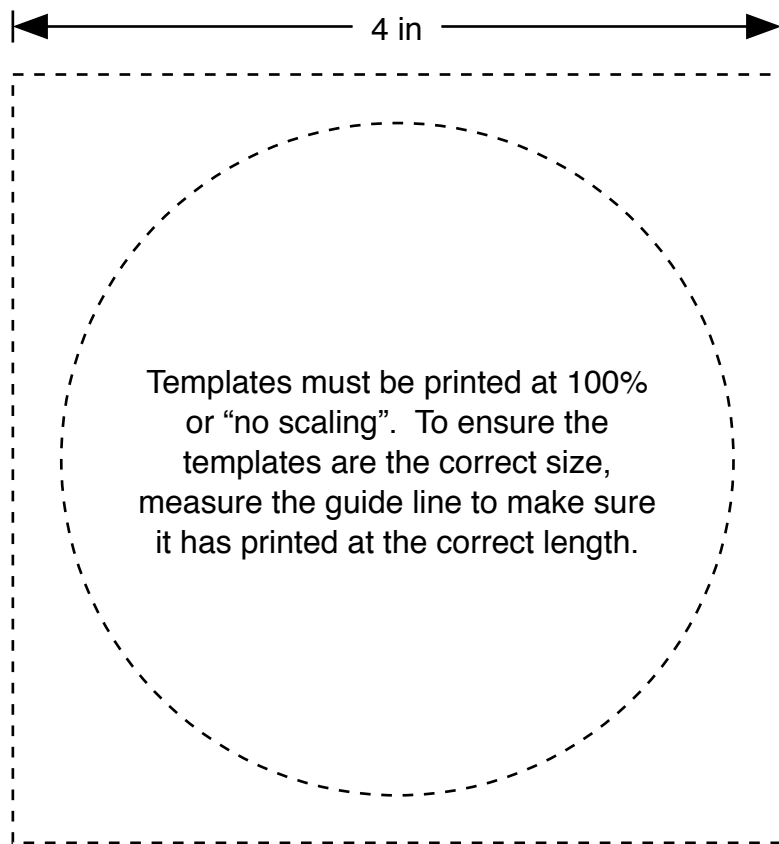
4. Trace the circle template onto four squares of bondaweb and cut out around the outside square line.
5. Fuse to the back of the Floral 5" squares, centering so that there is a ½" gap all round. Fig 1
6. Cut out the centre circle. Fig 2
7. Fuse the Placement 4" fussy cut squares to the back of the Floral squares, again centering to leave a ½" gap all round. Fig 3 (shown from the back) and fig 4 (shown from the front).
Stitch around the outside of the circle in straight, zigzag, blanket stitch or similar.



8. Sew two of these squares to each end of the two shorter Heads strips and sew those to the top and bottom of the quilt top taking care to orientate them so they will all be upright in the finished quilt.
9. Sash the sides of the quilt top with the spectrum 2 ½" x 53" strips then the top and bottom with the spectrum 2 ½" x 39" strips.

Finishing the quilt

1. Sew the binding strips end to end using diagonal or straight seams as preferred and press wrong sides together along the length to make a double fold binding.
2. Make a quilt sandwich, basting together the quilt back, the wadding and the quilt top.
3. Quilt as desired then trim the quilt square, removing excess wadding and backing. We quilted horizontal straight lines approximately ½" apart using a cream 40wt Aurifil thread.
4. Bind the quilt taking care to mitre the corners.





1870/Q Scatter



1878/P Triangles



1870/T Scatter



1878/T Triangles



1871/Q Placement



1874/V Floral



1871/P Placement



1874/Q Floral



1875/P Tonal Flowers



1872/M Heads



1872/Q Heads



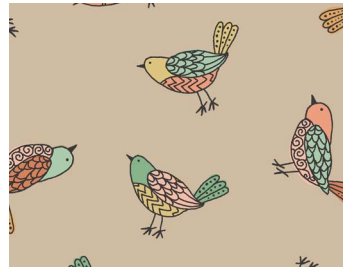
1875/V Tonal Flowers



1876/S Clouds



1873/T Birds



1873/V Birds



1876/Q Clouds



1877/M Stripe



1877/Q Stripe



1879/1 Panel (Actual size 60 x 114cms / 24" X 60")



Doodle Days
Finished size 39" x 57" (1m x 1.45m)

Designed by Lynne Goldsworthy

Download free instructions from www.makoweruk.com